

Rediscover Active Senior Living

# Millennia Village

\*The content and rates in this e-book is subject to terms & conditions which may be changed without prior notice.



Millennia  
Village



# About Millennia Village

Millennia Village is a purpose-built active senior living and wellness village proudly located in Seremban, Negeri Sembilan, Malaysia. This project was mooted in 2015, with construction commencing in 2019. Perched on a former quarry site that ceased operations around 15 years ago, the total land size spans 32 acres. Phase 1 comprises of 2 residential blocks of 360 furnished units, sitting on 8 acres of land.



## Lifestyle Resort

A senior active living resort that is purpose-built to provide seniors with a healthy lifestyle to enhance their overall wellbeing.



## Affordable

Affordably priced rental schemes that include extensive facilities and service that is truly value for money without compromising.



## Lease-Only

Lease-only business model in order to protect the character and the profile of Millennia Village and its residents.



## All Inclusive

A hassle-free, safe and comfortable environment so that residents can focus on living their lives to the fullest.



# The Founders

The founders of Millennia Village have been in the business of operating quarries and property development for over 30 years.

Lifestyle & Health Care Services Sdn. Bhd. was formed about 10 years ago to undertake the development of Millennia Village.

Millennia Village is designed to harmonise nature, health and community, in a safe and age-friendly environment.

**Front Row:** (Seated, from left to right) Madam Susan Ho, Ms. Diane Chia and Mr. Peter Ho;  
**Back Row:** (Standing, from left to right) Ms. Joanne Chia and Mr. John Chia

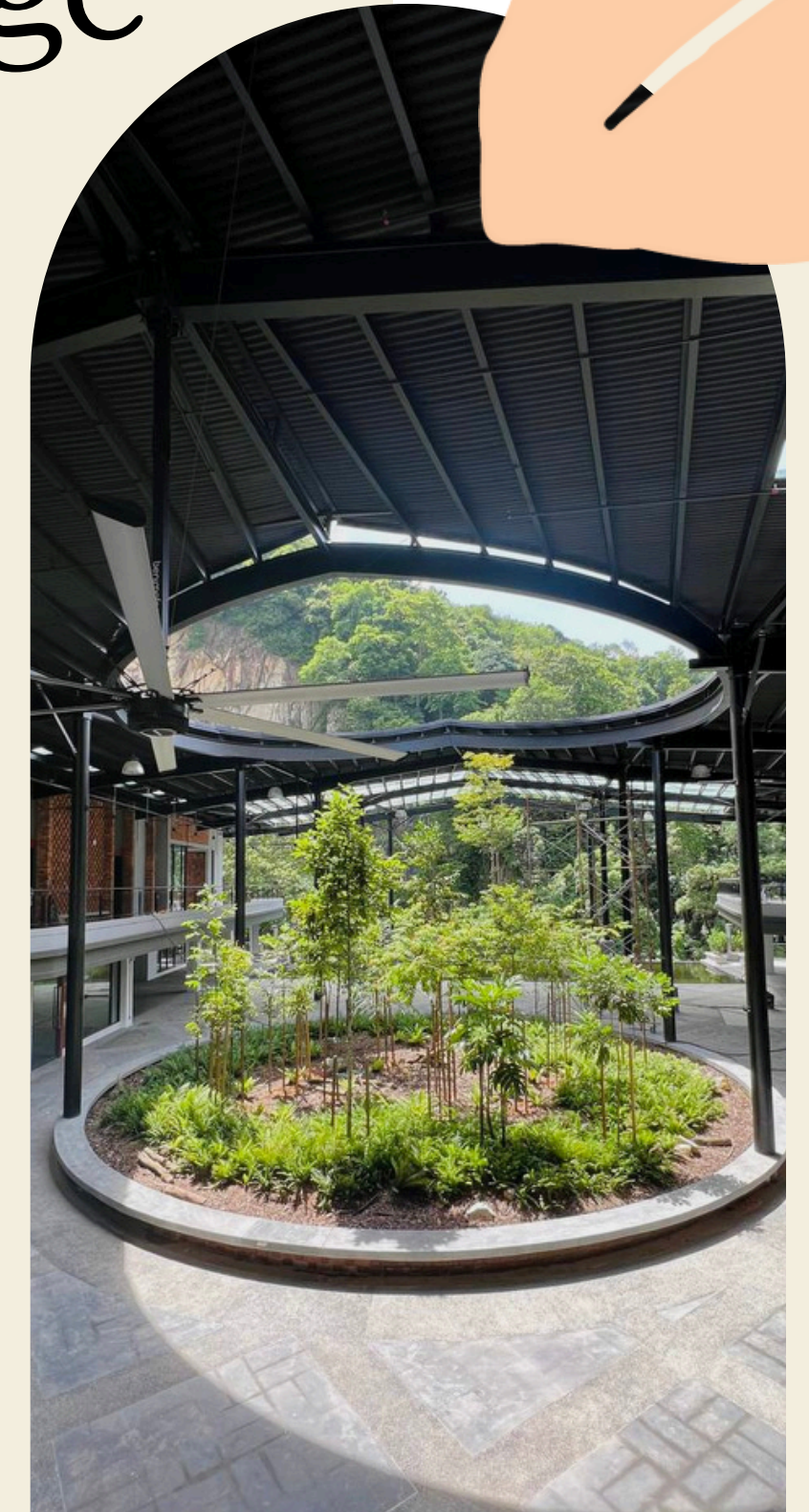
# Heart of Millennia Village

The design of the PIAZZA, as well as the entire architectural concept of Millennia Village, draws inspiration from the "Hakka Tulou" (客家土楼) architecture—an emblematic representation of the central communal space that defined the lifestyle and camaraderie within traditional Hakka communities.

The essence of "Hakka Tulou" embodies a collective community where residents converge, connect, communicate, and share life experiences together.

Millennia Village aspires to provide senior citizens with an opportunity to embrace community living and foster camaraderie among like-minded individuals.

We aim to redefine the senior years not as "the beginning of the end" but rather as "the start of more enriching and purposeful golden years."



# Retreat To Paradise

Millennia Village is a truly purpose-built active senior living resort. The residents' comfort, safety and well-being are our top priority. All of our units have the following age-friendly features to ensure residents can reside in comfort:

- Fully furnished units with kitchenette and appliances
- Electronic door system using card access
- Panic button in the bedroom and bathroom
- Fire-rated main door
- Wheelchair friendly
- Handrail in bathroom
- Ample storage and cabinets
- Telephone connecting to the guardhouse, facilities and room to room





# The Units

Unit A

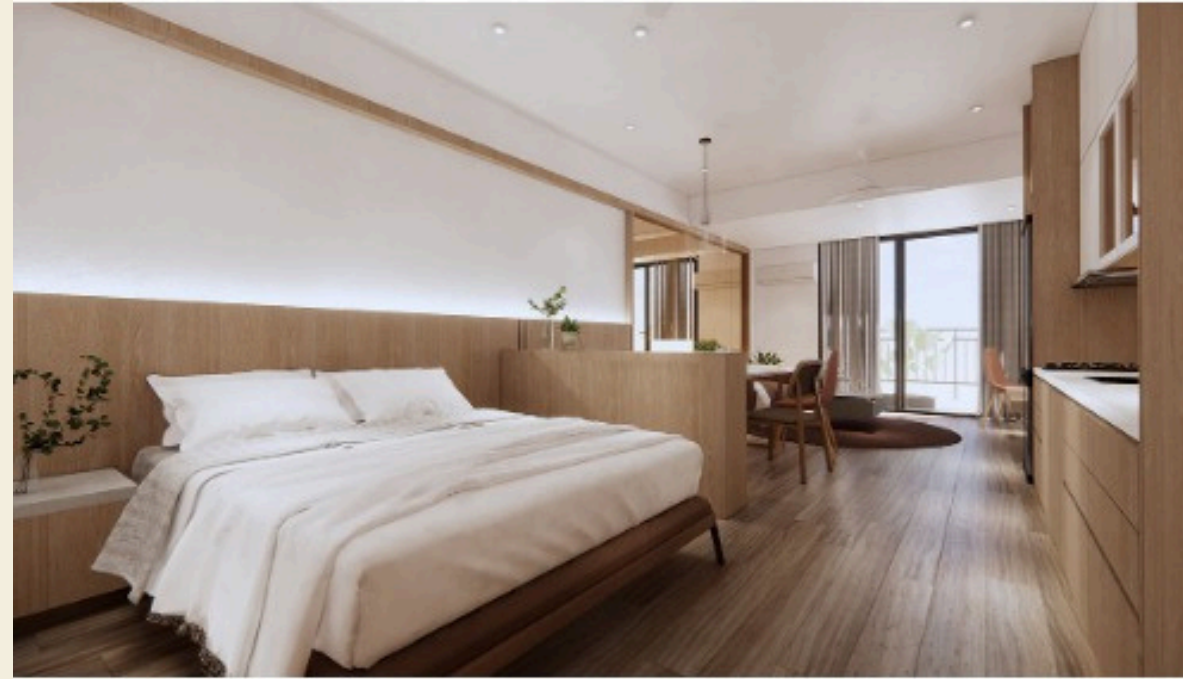


2 Bedroom Suite

Sqft **878**

Price (monthly) **RM8,000**

Unit B



Studio Suite

Sqft **481**

Price (monthly) **RM7,000**

Unit C



Studio Plus

Sqft **465**

Price (monthly) **RM6,000**

# Medium To Long Term Stay

## MONTHLY TENANCY RATES\*

TYPE	RENTAL PER MONTH (DOUBLE OCCUPANCY)	RENTAL PER MONTH (SINGLE OCCUPANCY)	PAYMENT TERMS
2 Bedroom Suite	RM8,000	RM7,500	1 Month + 1 Month Deposit (Fully Refundable)
Studio Suite	RM7,000	RM6,500	
Studio Plus	RM6,000	RM5,500	

## ANNUAL TENANCY RATES\*

TYPE	RENTAL PER MONTH (DOUBLE OCCUPANCY)	RENTAL PER MONTH (SINGLE OCCUPANCY)	FULLY REFUNDABLE DEPOSIT
2 Bedroom Suite	RM7,500	RM 7,000	RM90,000
Studio Suite	RM6,500	RM6,000	RM60,000
Studio Plus	RM5,500	RM5,000	RM60,000

### All rates are inclusive of :

- Fully furnished unit (inclusive of TV, microwave and kitchenette)
- Water & electricity on fair use basis
- Housekeeping - once weekly cleaning of unit and once daily cleaning of common corridors/grounds
- Daily breakfast & dinner
- Scheduled senior wellness activity (based on availability)
- WIFI
- Free access to all facilities except for multifunction rooms

\*All prices are subject to 8% Sales & Service Tax (SST).

# Short Term Stay

TYPE	2 DAYS 1 NIGHT (DOUBLE OCCUPANCY)	2 DAYS 1 NIGHT (SINGLE OCCUPANCY)
2 Bedroom Suite	RM950	RM 825
Studio Unit	RM750	RM625

TYPE	8 DAYS 7 NIGHTS (DOUBLE OCCUPANCY)	8 DAYS 7 NIGHTS (SINGLE OCCUPANCY)
2 Bedroom Suite	RM 4,300	RM 3,600
Studio Suite	RM 4,200	RM 3,500
Studio Plus	RM 4,100	RM 3,400

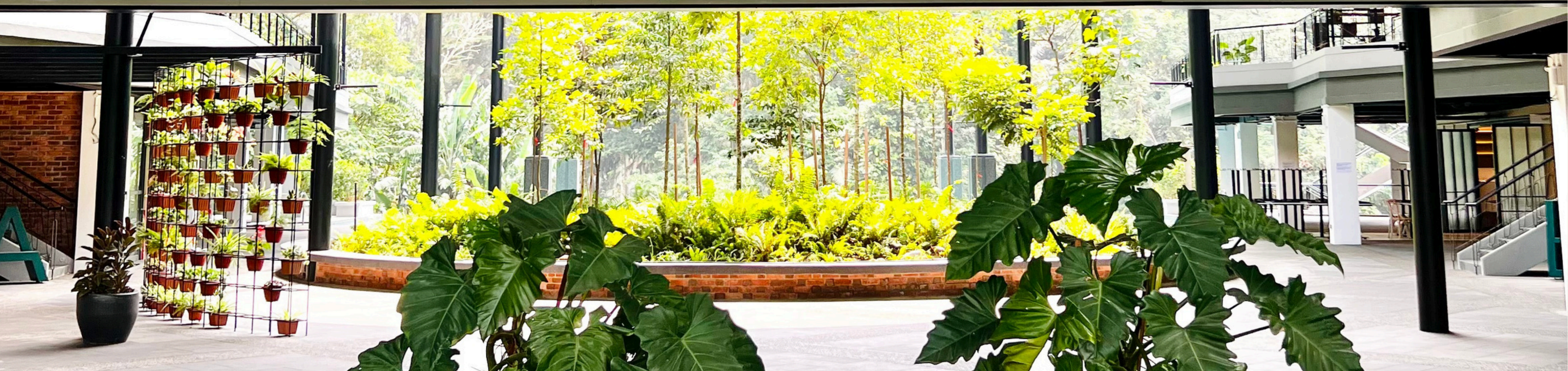
TYPE	3 DAYS 2 NIGHTS (DOUBLE OCCUPANCY)	3 DAYS 2 NIGHTS (SINGLE OCCUPANCY)
2 Bedroom Suite	RM 1,400	RM 1,200
Studio Unit	RM 1,200	RM 1,000

- All rates are inclusive of :
- Fully furnished unit (inclusive of TV, microwave and kitchenette)
- Water & electricity on fair use basis
- Housekeeping - once weekly cleaning of unit and once daily cleaning of common corridors/grounds
- Daily breakfast, lunch & dinner
- Scheduled senior wellness activity (based on availability)
- WIFI
- Free Access to all facilities except for multifunction rooms

\*All prices are subject to 8% Sales & Service Tax (SST).

Millennia  
Village

# The Piazza



# Our Facilities



ELEVATE - Gym



MOVE - Studio



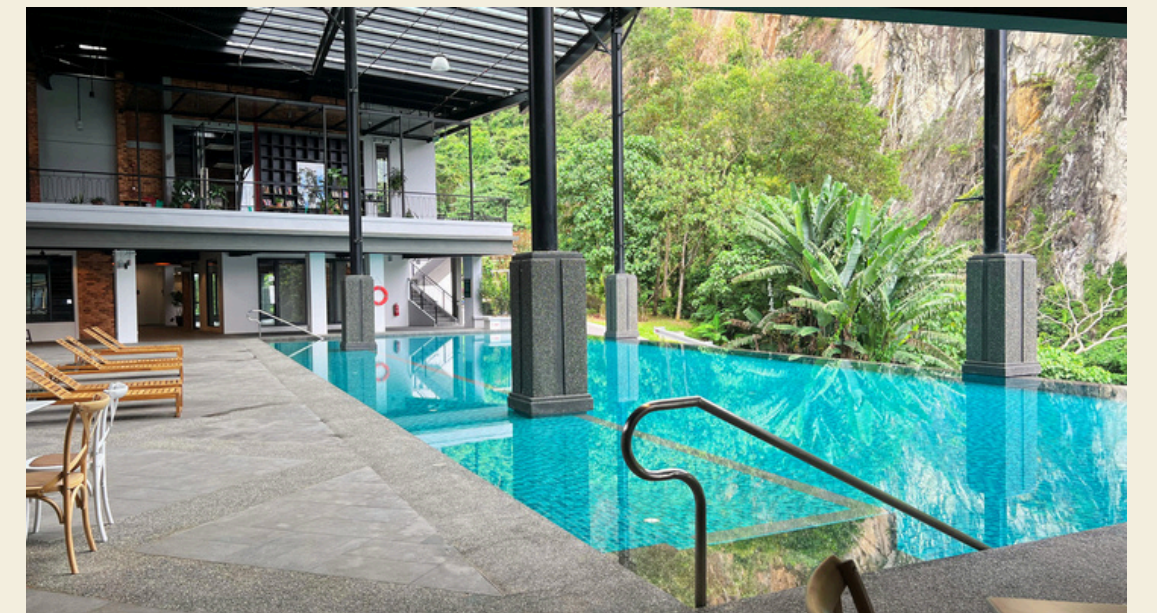
FORUM - Meeting Room



Arts & Crafts



RISE - Fitness Garden



The Pool

# Our Facilities



SAFFRON - All Day Dining



Kopitiam - Restaurant



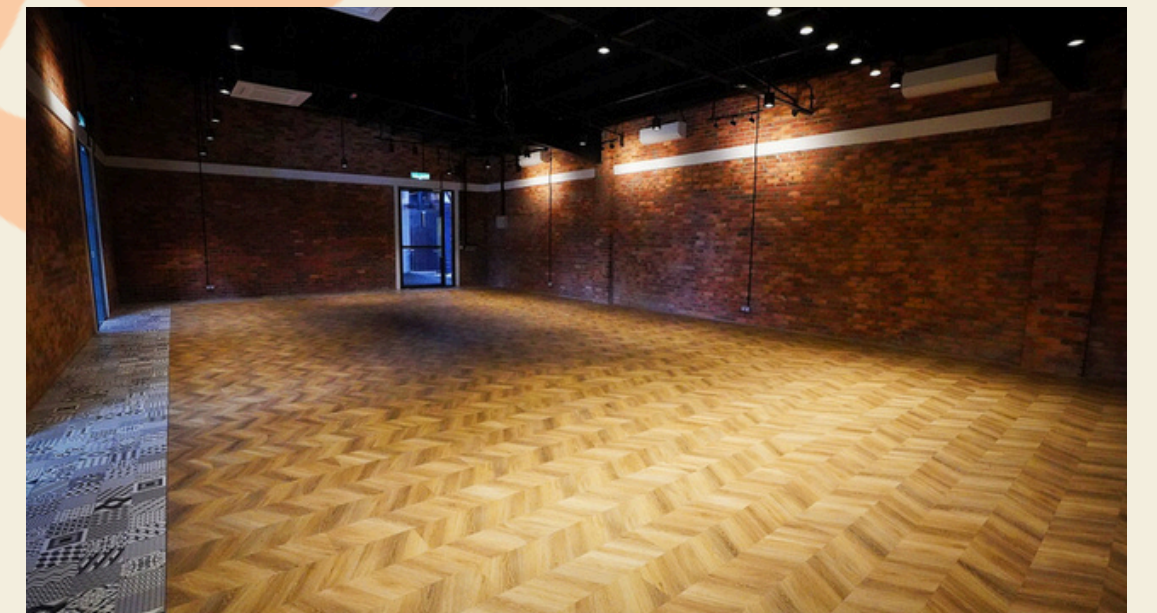
Library



PLAY - Recreation Room



A/V Room



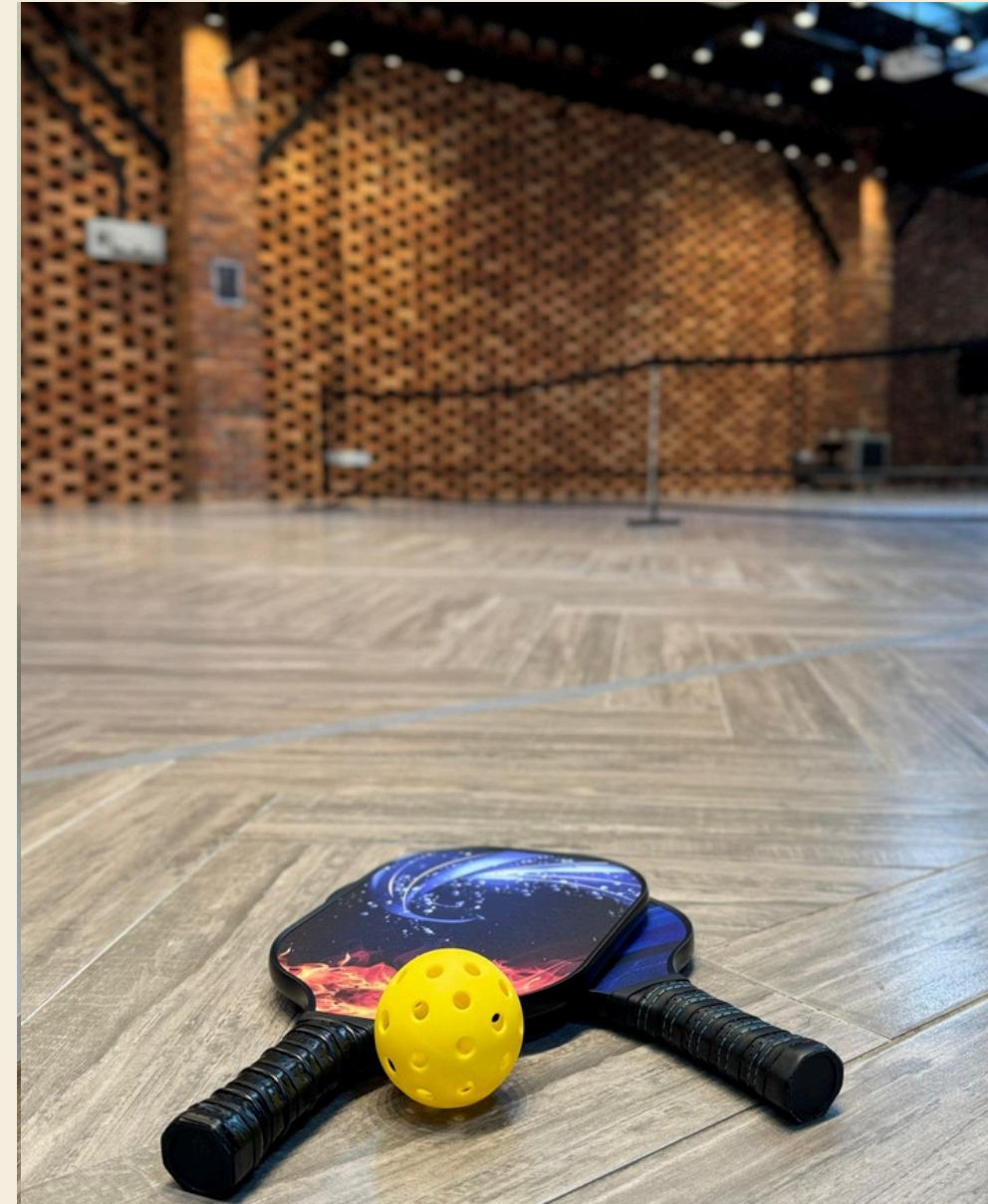
Theatre

# Our Facilities



**Lauderette**

(on every residential floor)



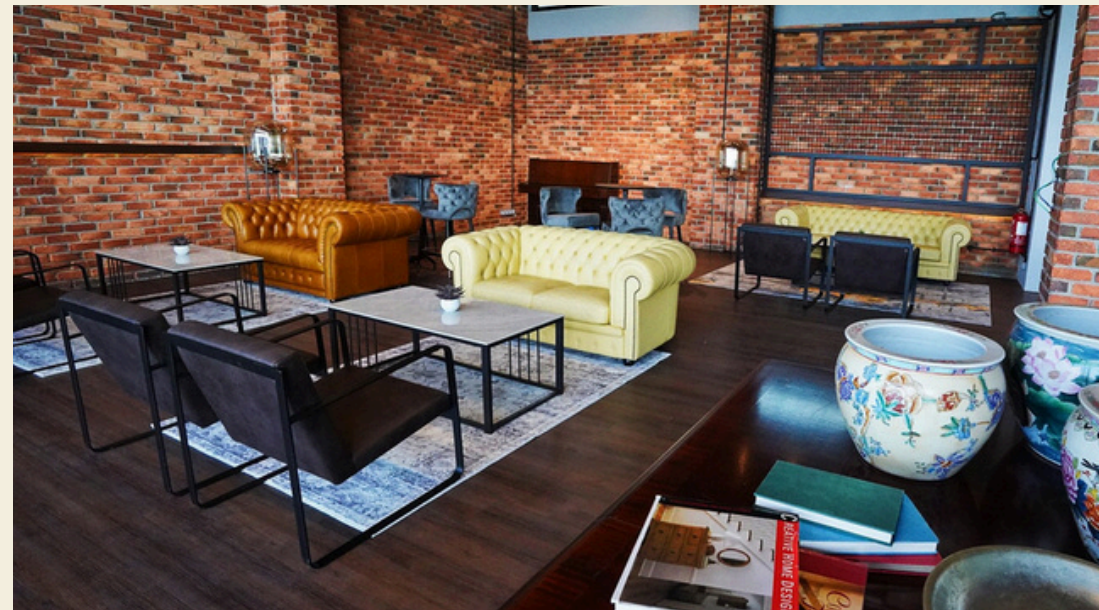
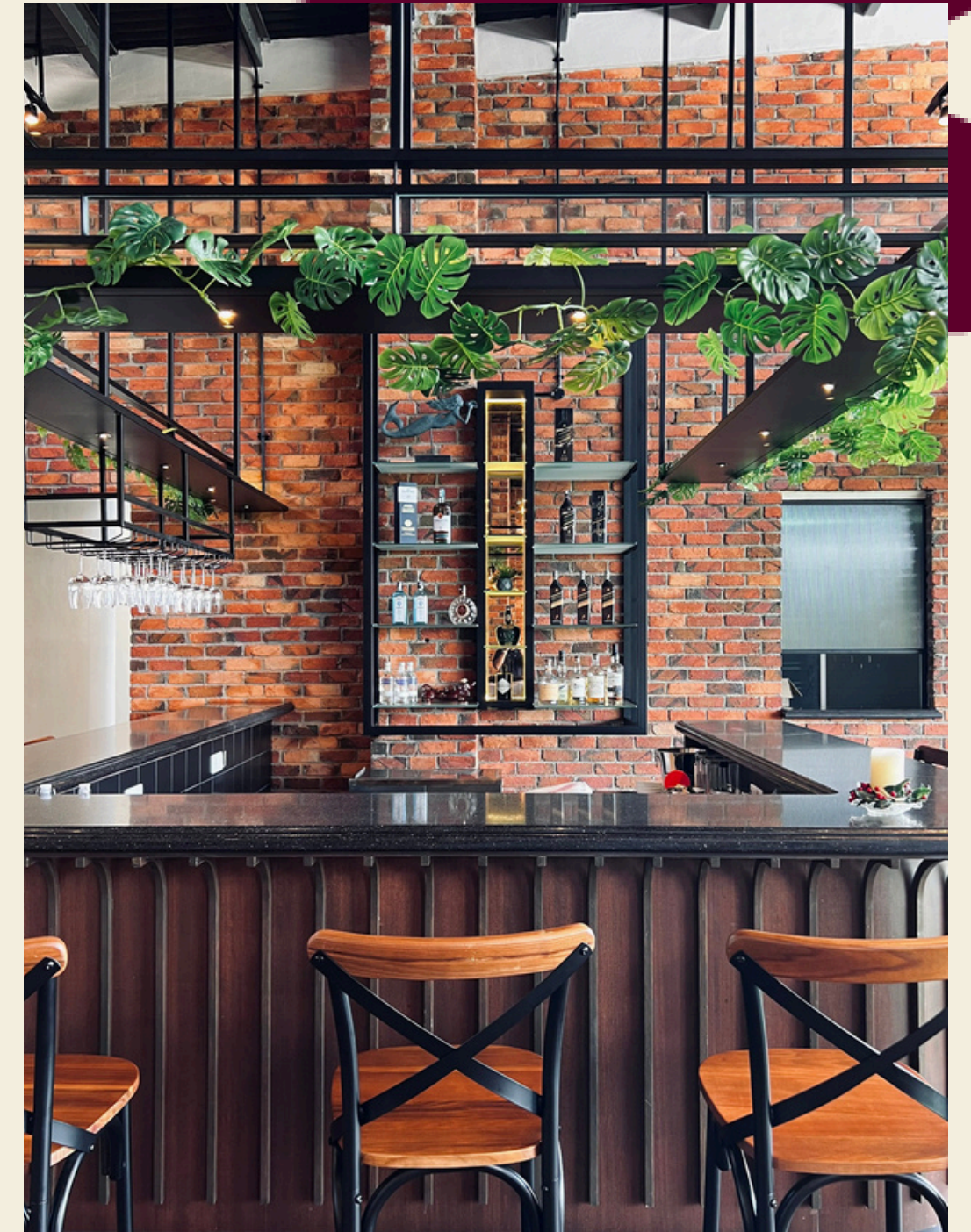
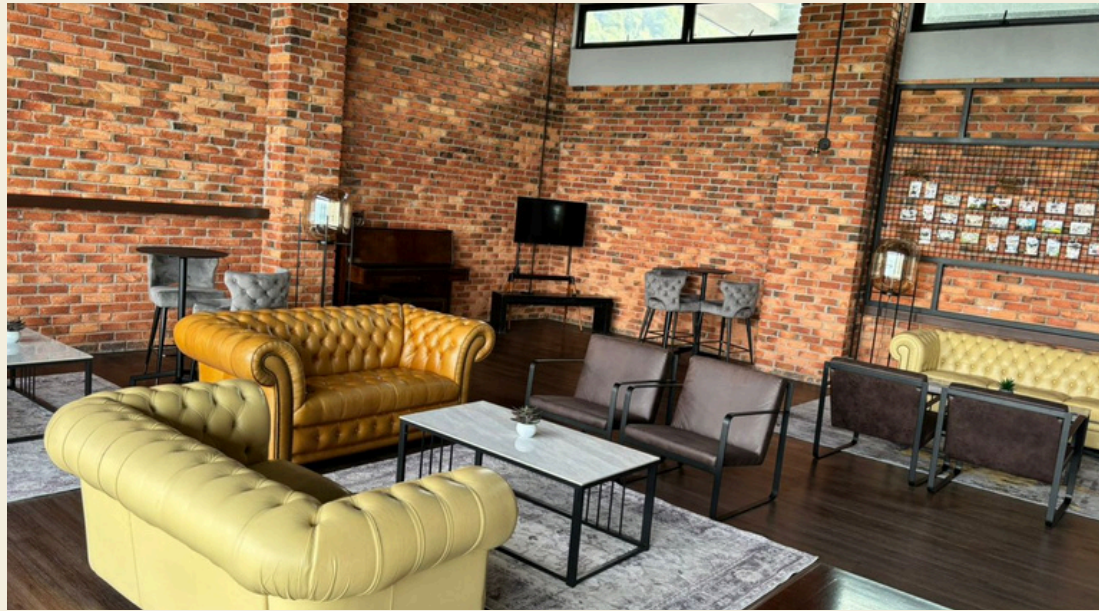
**Pickleball**



**Massage Services**

Millennia  
Village

# The Roof Top (Lounge)



# Activities



## Complimentary

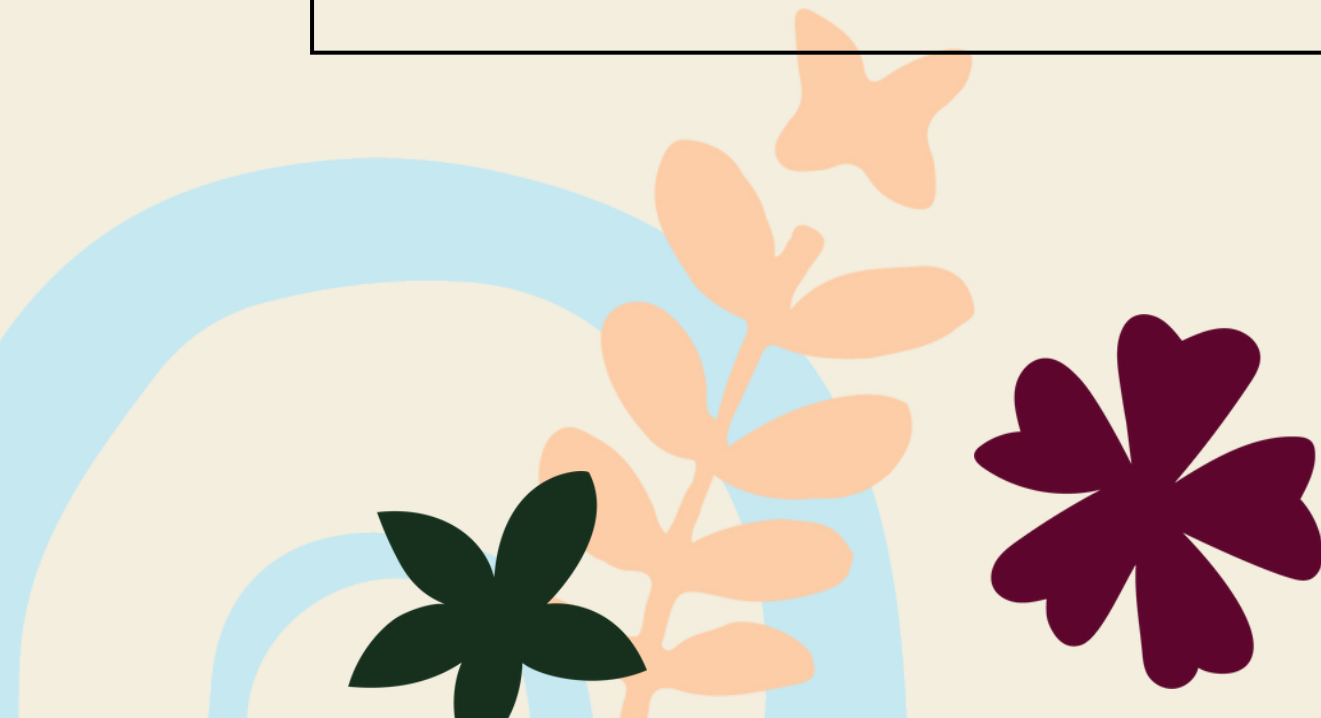
- Ping Pong / Table Tennis
- Pickleball
- Badminton
- Billiards / Pool
- Karaoke
- Movie Nights
- Board Games, Mahjong, Jinrami, Bingo etc.
- Village Farm Activities
- Lakeside Activities
- Hiking
- Outdoor Fitness Garden

## Chargeable

- Line Dancing
- Praise Dancing
- Tai Chi / Qi Gong (with props)
- Group Swim / Aqua Aerobics
- Stretch & Sweat / Vitality Fitness
- Movement for Seniors
- Senior Yoga / Mat Pilates
- Art / Baking / Cooking Demos
- Workshops - finance, health, wellness etc.
- Personal Training (Flexibility, Mobility, Strength etc.)

### Wellness

- General Health Assessments / Consultations
- Mental Health Assessments / Consultations
- Physiotherapy
- Active Isolated Stretching
- Stretch & Massage
- Sports Massage
- Therapeutic Massage
- Traditional & Complementary Medicine



# Event Space - Rate Card

SPACE	FULL DAY RENTAL (RM) (9am - 6pm)	
	WEEKDAYS	WEEKENDS / PUBLIC HOLIDAYS
All Event Spaces	15,800	21,000
The Piazza	5,600	8,000
<b>Banquet / Seminar Spaces</b>		
Forum G	1,800	2,200
Agora	800	1,000
Theatre	2,000	2,400
Forum 1	2,500	3,000

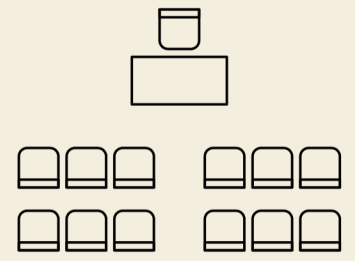
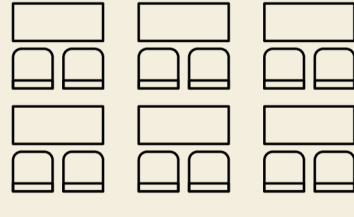
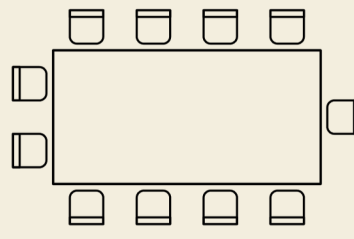
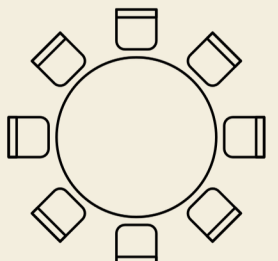
# Event Space - Rate Card

SPACE	FULL DAY RENTAL (RM) (9am - 6pm)	
	WEEKDAYS	WEEKENDS / PUBLIC HOLIDAYS
<b>Lifestyle Spaces</b>		
Library	1,050	1,500
Arts & Crafts	1,050	1,500
A/V Room	1,050	1,500
Play	1,000	1,300
<b>Wellness Spaces</b>		
Move	600	1,800
Elevate	1,300	1,000
Swimming Pool	600	2,000

# Event Space - Rate Card

SPACE	FULL DAY RENTAL (RM) (9am - 6pm)	
	WEEKDAYS	WEEKENDS / PUBLIC HOLIDAYS
<b>Outdoor Spaces</b>		
Lakeside	400	500
Fitness Garden	600	800
Village Farm	1,000	1,500
<b>Event BOH Storage</b>		
Storage Rooms (Salon, Ensemble)	150	200

# Event Space - Capacity

Function Room / Hall	Height (ft)	Dimension (m) W x L	Floor Space (Sq. ft)	Theatre	Classroom	Boardroom	Round Table
							
Concourse		25 x 46	N/A	N/A	N/A	N/A	N/A
Forum G	10	7.8 x 7.6	680	30 pax	40 pax	12 pax	N/A
Agora	10	11 x 15	1780	N/A	N/A	N/A	100 pax
Theatre	12	9.3 x 15.2	1518	60 pax	40 pax	N/A	40 pax
Forum 1	15.7	10 x 20	2077	120 pax	60 pax	N/A	60 pax

# Event Space - Capacity

Function Room ( Indoor )	Dimension (m) W x L	Floor Space (Sq. ft)
Library	6.6 x 9.9	874
Art & Craft	7.8 x 8	676
AV Room	8.25 x 7.3	613
Play	11.33 x 7.3	890
Move	8 x 8.08	696
Elevate	11.8 x 17.6	1432
Storage Rooms (Salon)	8.1 x 4.15	358
Storage Rooms (Ensemble)	8 x 4.15	353

# Event Space - Capacity

Function Room ( Outdoor )	Dimension (m) W x L	Floor Space (Sq. ft)
Swimming Pool	10 x 25	2471
Lakeside	N/A	N/A
Outdoor Fitness Garden	N/A	N/A
Village Farm	N/A	N/A

Millennia  
Village

# Millennia Village Reel

[Click To View](#)

Millennia  
Village

# Our Location

Desa Millennia Mutiara, Persiaran Millennia Mutiara  
70200 Seremban, Negeri Sembilan Darul Khusus,  
Malaysia

[Click For Directions](#)

For enquiries:  
[info@millenniavillage.com](mailto:info@millenniavillage.com)  
+6012 890 8038



[Scan / Click To What's App Us](#)

[Instagram](#)

[Website](#)



## Hospitals/Medical Centres

- CMH Specialist Hospital
- Tuanku Ja'afar Hospital
- Mawar Medical Centre
- KPJ Seremban Specialist Hospital
- Columbia Asia Hospital

## Green Lungs

- Seremban Lake Garden
- S2 City Park

## Clubs

- Royal Sungai Ujong Club
- Seremban International Golf Club
- IJM Land S2 Club
- X PARK Golf Driving Range
- d'Tempat Country Club

## Cultural Centres

- Hakka Cultural Museum
- Royal Gallery Tuanku Ja'afar
- Negeri Sembilan State Museum

## Universities / International Schools

- Nilai University
- INTI International University
- Epsom College in Malaysia
- Matrix International School
- Soka International School

# Millennia Village

[millenniavillage.com](http://millenniavillage.com)

